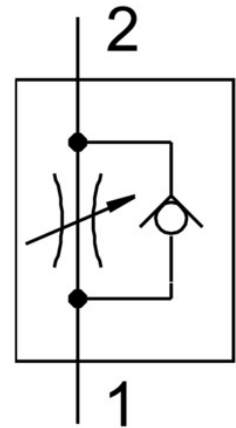


One-way flow control valve GRLZ-M5-B

Part number: 151183

FESTO



Data sheet

Feature	Value
Type code	GRLZ
Valve function	Supply air flow control non-return function
Pneumatic connection 1	M5
Pneumatic connection 2	M5
Adjusting element	Slotted screw
Type of mounting	Screw-in
Standard nominal flow rate in flow control direction	95 l/min
Standard nominal flow rate in non-return direction	76 l/min ... 95 l/min
Operating pressure	0.2 bar ... 10 bar
Ambient temperature	-10 °C ... 60 °C
Explosion prevention and protection	Observe the information on the certificate Zone 1 (ATEX) Zone 2 (ATEX) Zone 21 (ATEX) Zone 22 (ATEX)
Mounting position	Any
Symbol	00991453
Standard flow rate in flow control direction 6 → 0 bar	169 l/min
Standard flow rate in non-return direction at 6 → 0 bar	135 l/min ... 170 l/min
Operating medium	Compressed air as per ISO 8573-1:2010 [7:4:4]
Information on operating and pilot media	Operation with oil lubrication possible (required for further use)
Temperature of medium	-10 °C ... 60 °C
Nominal width	2 mm
Max. tightening torque	1.5 Nm
Product weight	11 g
Material of screwed trunnion	Brass Nickel-plated
Note on materials	RoHS-compliant
Seals material	NBR
Material of adjusting screw	Brass

Feature	Value
Swivel joint material	Die-cast zinc